

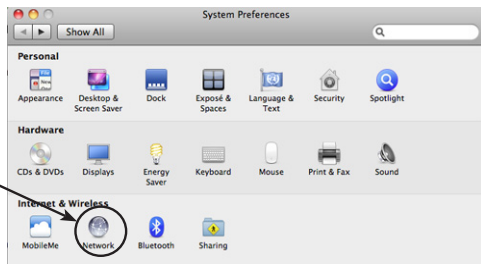
# EDUROAM INSTRUCTIONS MACINTOSH

OS X 10.6.X (Snow Leopard)

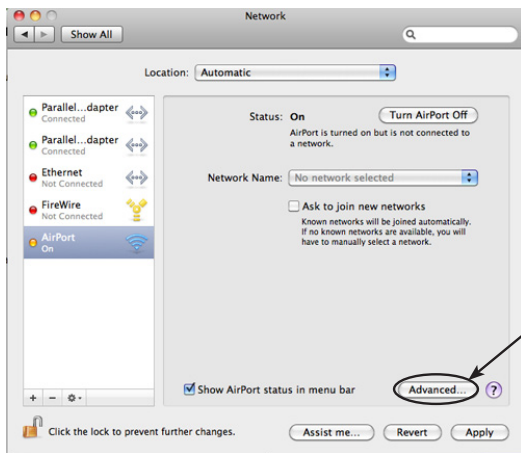
## EDUROAM SETUP

Before you can use Eduroam, you must use the 'Check your UTORid' web-site. Go to <https://www.utorid.utoronto.ca/> and click on **verify** under **Problems with your UTORid?**

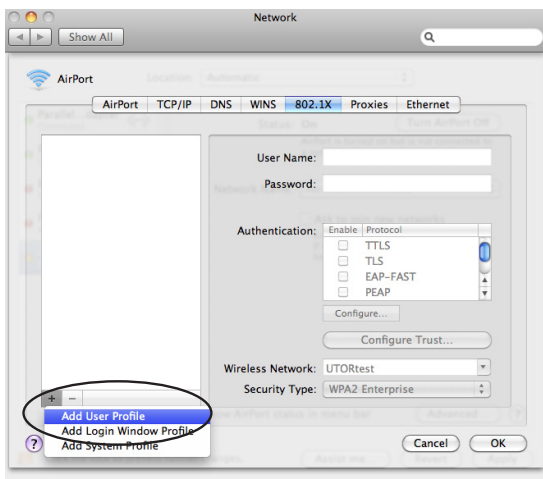
1. In **System Preferences**, click **Network**.



2. Choose **Airport**, and click **Advanced**.



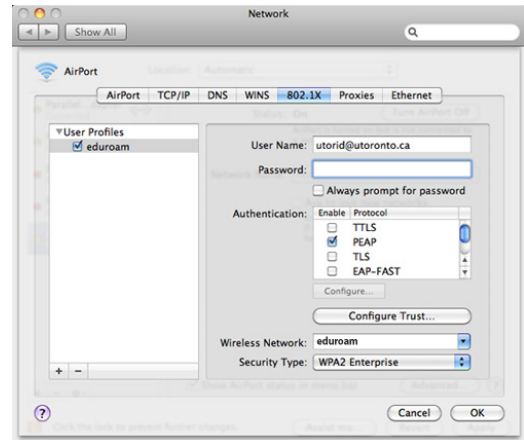
3. Go to the **802.1X** tab, click the **+** sign, and choose **Add User Profile** from the pull-down menu.



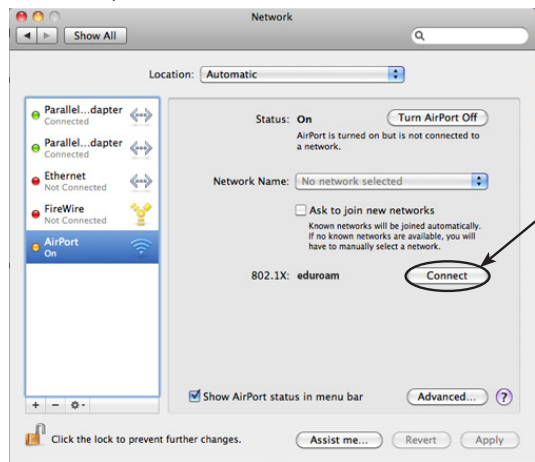
4. Name the profile **eduroam**.
  - In the **User Name** field, type **utorid@utoronto.ca**, (where "utorid" is your actual UTORid)
  - Type your UTORid password in the **Password** field

- Under **Authentication**, choose **PEAP** and uncheck everything else
- Under Wireless Network choose **eduroam**
- For **Security Type** choose **WPA2 Enterprise**

Click **OK**.



5. In the main Network window, click **Connect**. It may take a few minutes to authenticate. The wireless icon in the top right corner will indicate when you are connected.



## RECONNECTING

Once you have gone through the setup above, you will not have to complete those steps again. To connect to an eduroam network, follow the steps below.

1. Go to the wireless network icon in top right corner, and select **eduroam** from the pull-down menu.
2. In the password prompt window, type **utorid@utoronto.ca**, (where "utorid" is your actual UTORid) in the **User Name** field. Type your **UTORid password** in the **Password** field and select **eduroam** from the pull-down menu beside **802.1X**. Click **OK**.

