

# EDUROAM INSTRUCTIONS

# WINDOWS XP SP3

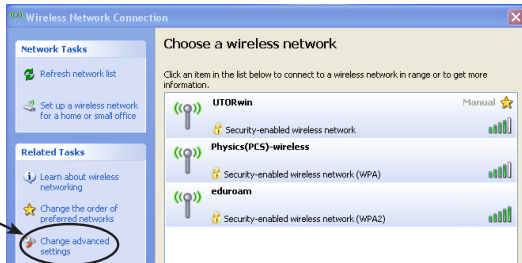
## EDUROAM SETUP

Before you can use Eduroam, you must use the 'Check your UTORid' web-site. Go to <https://www.utorid.utoronto.ca/> and click on **verify** under **Problems with your UTORid?**

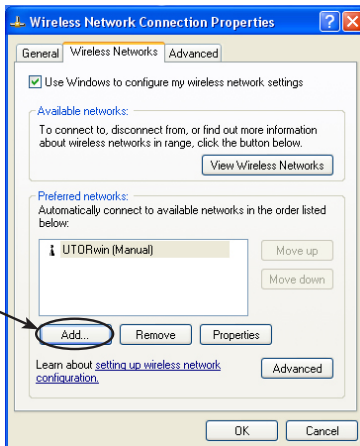
1. Click on the wireless network icon in the bottom right corner and choose **View Available Wireless Networks**.



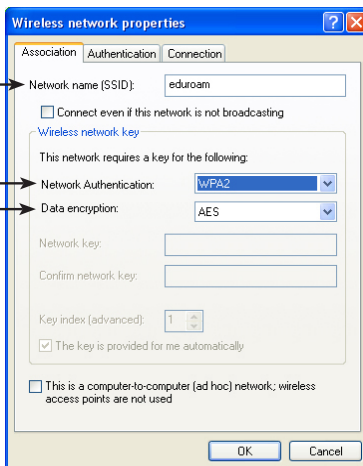
2. In the window that opens, click **Change Advanced Settings**.



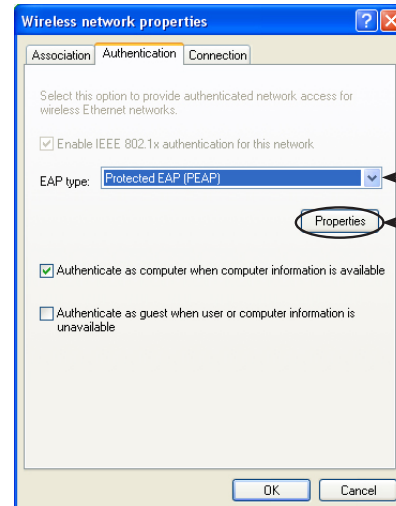
3. Go to the **Wireless Networks** tab and click **Add**.



4. Fill in the following information:
  - **Network Name:** eduroam
  - **Network Authentication:** WPA2
  - **Data Encryption:** AES



5. Go to the **Authentication** tab. Under **EAP type**, select **Protected EAP (PEAP)**. Click the **Properties** button.

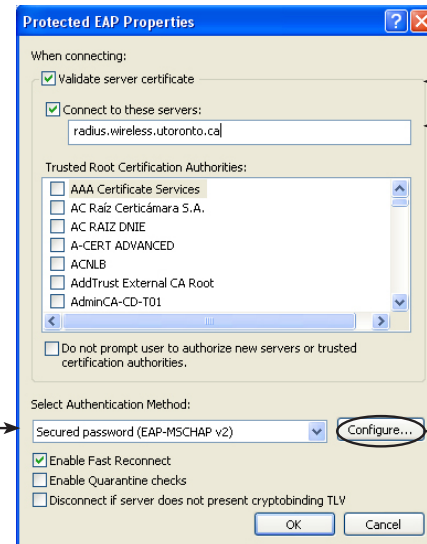


6. In the properties window, ensure that **Validate server certificate** is checked.

Check **Connect to these Servers** and type `radius.wireless.utoronto.ca`

For **Select Authentication Method** choose **Secured Password (EAP-MSCHAP v2)**.

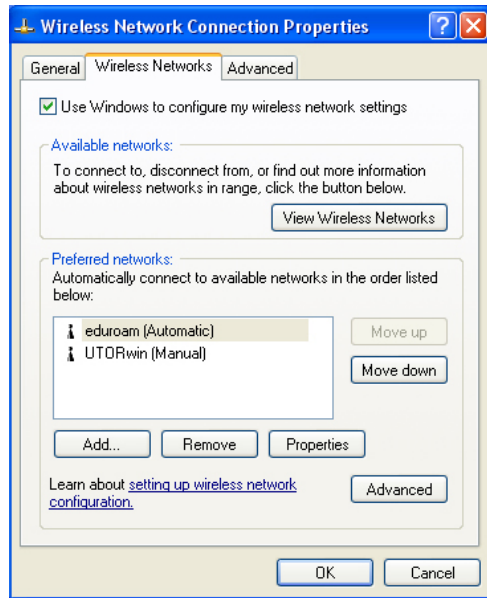
Click the **Configure** button.



7. Uncheck **Automatically use my windows logon name and password**. Click **OK**.



- Click **OK**, then **OK** again. You should be back in the **Wireless Network Connection Properties** window and **eduroam** should show up in the **Preferred networks** list.

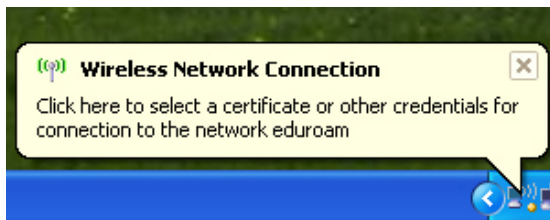


Since UTORwin should be your primary network while on campus, it should appear above eduroam in the list, so it's the first network your computer sees. To do this, choose **UTORwin** and click **Move up** until it's above eduroam.

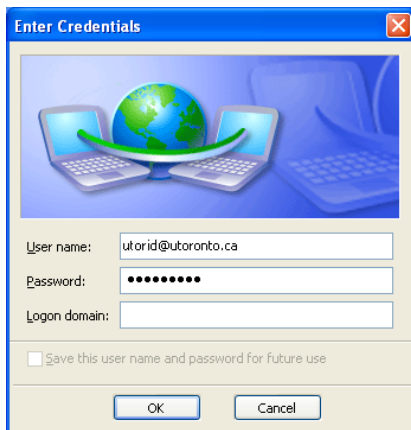
Click **OK** to close this window.

## CONNECTING AND RECONNECTING

- To connect to the eduroam network, mouse over the wireless network icon until you see the alert message shown at right. Click on the bubble to bring up the authentication window.



- Enter your User name as **utorid@utoronto.ca** (where "utorid" is your actual UTORid), and your UTORid password. Click **OK**.



- You will see a **Validate Server Certificate** window. Click **OK**.



- You will see a status window showing the attempt to authenticate. The wireless icon at the bottom right will show activity when connected.

